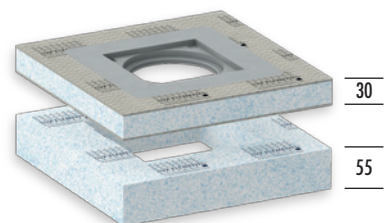
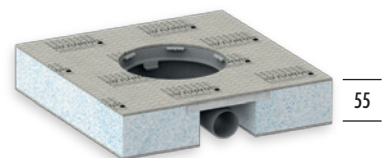
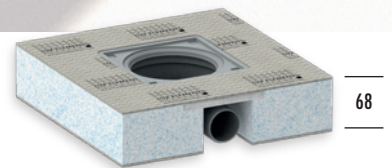


## Hard foam shower drain element for the installation in screed floors with slope **LUX ELEMENTS®-TUB...MQ SET 300** – Ready for tiling!

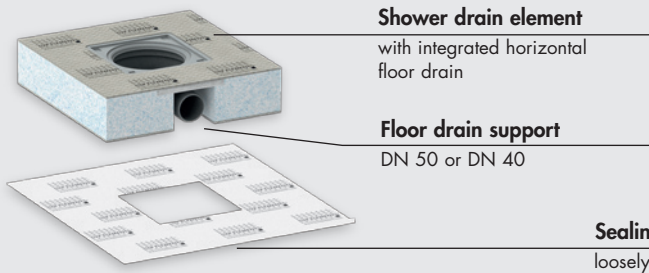


- Hard foam shower drain element, flexible in use with integrated or separate drainage technology
- Large selection of grate fitting frames
- For barrier-free construction
- Including loose sealing sleeve
- Now also especially for renovation with an installation height of only 55 mm

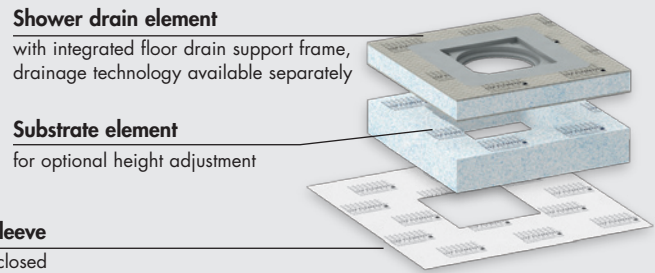


## SYSTEM COMPONENTS – LUX ELEMENTS®-TUB-...MQ SET 300

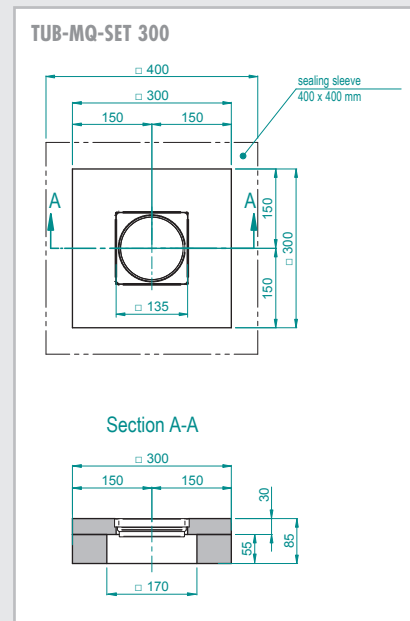
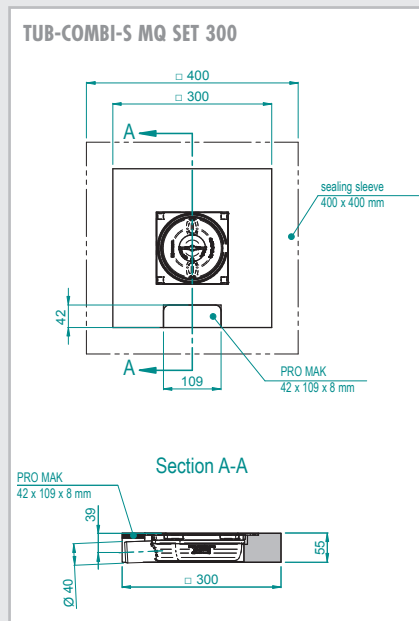
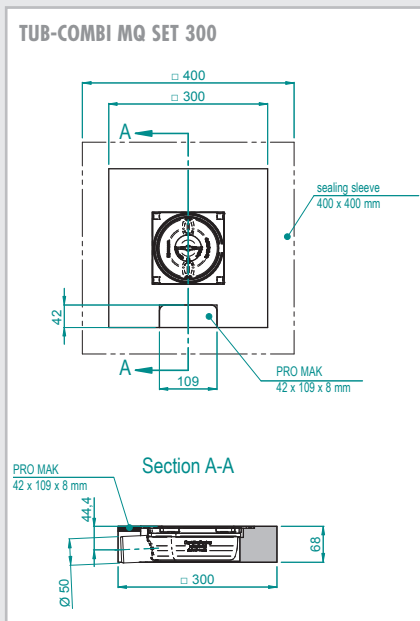
Installation principle, integrated drainage technology



Installation principle, separate drainage technology



## DIMENSIONS – LUX ELEMENTS®-TUB-...MQ SET 300



Dimensions in mm



Visit [www.luxelements.com](http://www.luxelements.com) for further information.  
Data sheets and test certificates under 'Downloads'.

### PRODUCT SPECIFICATIONS

	ARTICLE-NUMBER	ARTICLE-NAME / ARTICLE-DESCRIPTION	NOMINAL FORMATS/DIMENSIONS LENGTH x WIDTH x HEIGHT	UNIT
	LTUBE19003	<b>TUB-COMBI MQ SET 300</b> , extra-slim hard foam shower drain element with integrated horizontal floor drain support <b>DN 50</b> , with odour trap, incl. loose sealing sleeve 400 x 400 mm, drain in the centre	300 x 300 x 68 mm	set
	LTUBE19325	<b>TUB-COMBI-S MQ SET 300</b> , extra-slim hard foam shower drain element with integrated horizontal floor drain support <b>DN 40</b> , with odour trap, incl. loose sealing sleeve 400 x 400 mm, drain in the centre	300 x 300 x 55 mm	set
	LTUBE1111	<b>TUB-MQ-SET 300</b> , hard foam shower drain element with integrated floor drain support frame 135 x 135 mm, loose sealing sleeve 400 x 400 mm and substrate element TUB-UMQ 300 x 300 x 55 mm	300 x 300 x 30 mm	set

### INDIVIDUAL PACKAGING

ARTICLE-NUMBER	ARTICLE-NAME	CONTAINER	PACKAGING	DIMENSIONS – LENGTH x WIDTH x HEIGHT	UNIT	WEIGHT/UNIT	WEIGHT/CARTON
LTUBE19003	TUB-COMBI MQ SET 300	1 set	carton	310 x 305 x 100 mm	piece	2,60 kg	3,40 kg
LTUBE19325	TUB-COMBI-S MQ SET 300			310 x 305 x 90 mm		2,60 kg	3,40 kg
LTUBE1111	TUB-MQ-SET 300			340 x 310 x 120 mm		3,30 kg	4,10 kg